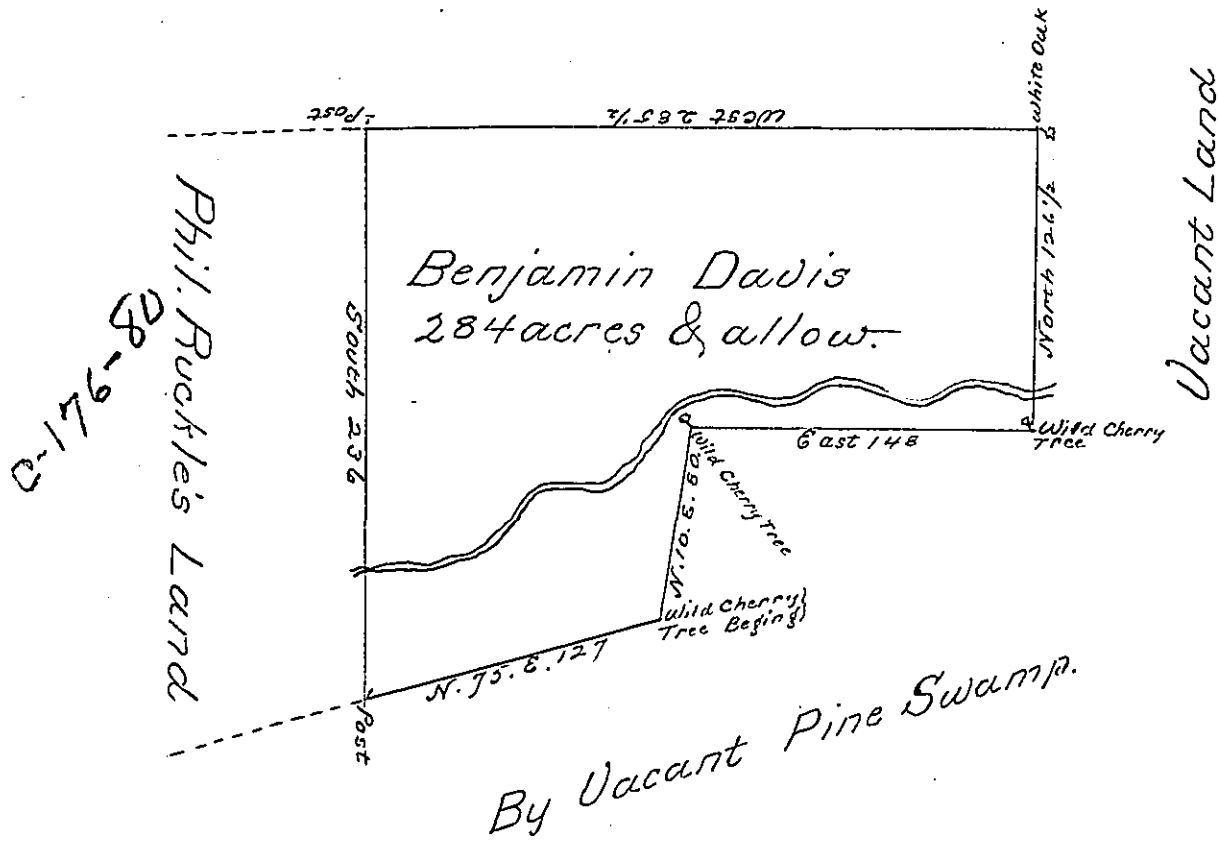


E-347

By the Foot of Nittany Mountain



The Draught of a Tract of Land called  
situate in Sinking Spring Valley in Potter's  
Township Northumberland County, containing Two  
Hundred Eighty Four acres with the usual allow-  
ance of Six acres p cent. for roads. Survey'd the 15th  
day of October Anno Domini 1774 In Pursuance of  
a Warrant from the Honble. Proprietaries to Benja-  
min Davis bearing Date at Philada. the 24th day of  
November Anno Domini 1773

p. Wm. Maclay

To John Lukens Esq S. G. )  
of Pennsylvania )

IN TESTIMONY that the above is a copy of the original remaining on file in  
the Department of Internal Affairs of Pennsylvania, made  
conformably to an Act of Assembly approved the 16th day of  
February, 1833, I have hereunto set my Hand and caused  
the Seal of said Department to be affixed at Harrisburg,  
this fourth day of September 1900

James W. Pitta  
Secretary of Internal Affairs.